

REGIONAL DIVISION OFFICES

Houston (est 1913)
 111 T.C. Jester Blvd. (77007)
 P. O. Box 4417 (77210-4417)
 (713) 868-6111
 (713) 868-5503 fax

Dallas (est 1956)
 1617 W. Crosby Road
 Suite 120
 Carrollton, Texas 75006
 (972) 466-0900
 (972) 466-3988 fax

Las Vegas (est 1989)
 3451 West Martin Ave
 Suite C
 Las Vegas, Nevada 89118
 (702) 435-5053
 (702) 435-2127 fax

Miami (est 1997)
 10125 NW 116th Way, #14
 Medley, Florida 33178
 (305) 884-5311
 (305) 884-2192 fax

New Orleans (est 1969)
 181 James Drive West
 St. Rose, LA 70087
 (504) 889-0811
 (504) 833-4045 fax

New York (est 2004)
 341 W 38th Street, 8th Floor
 New York, NY 10018
 (212) 823-9400
 (212) 823-9401 fax

San Antonio (est 1969)
 8964 Broadway
 P.O. Box 17155
 San Antonio, Texas 78217
 (210) 828-3325
 (210) 828-6434 fax

Austin (est 2007)
 2013 Centimeter Circle
 Suite B
 Austin, Texas 78758
 512-491-4100
 512-833-6685 fax

VISIT OUR WEBSITE
www.fiskcorp.com



ISSUE 3 / VOLUME 3 / FALL/WINTER 2009

Fisk Currents

FISK MIAMI ON THE MOVE



ORANGE LINE MIAMI

The MIA MOVER is a 1.4-mile Automated People Mover (APM) system that will run between Miami International Airport terminals and the off-airport multi-modal transportation center known as The Miami Intermodal Center (MIC).

The Parsons Odebrechet Joint Venture (POJV) Team, which includes Mitsubishi Heavy Industries America, Inc. (MHIA) and its long time partner, Sumitomo Corp of America, Inc. (SCOA), was awarded the contract for the rail cars following a competitive bid process. The formal Notice-to-Proceed was issued to the POJV Team in September 2008.

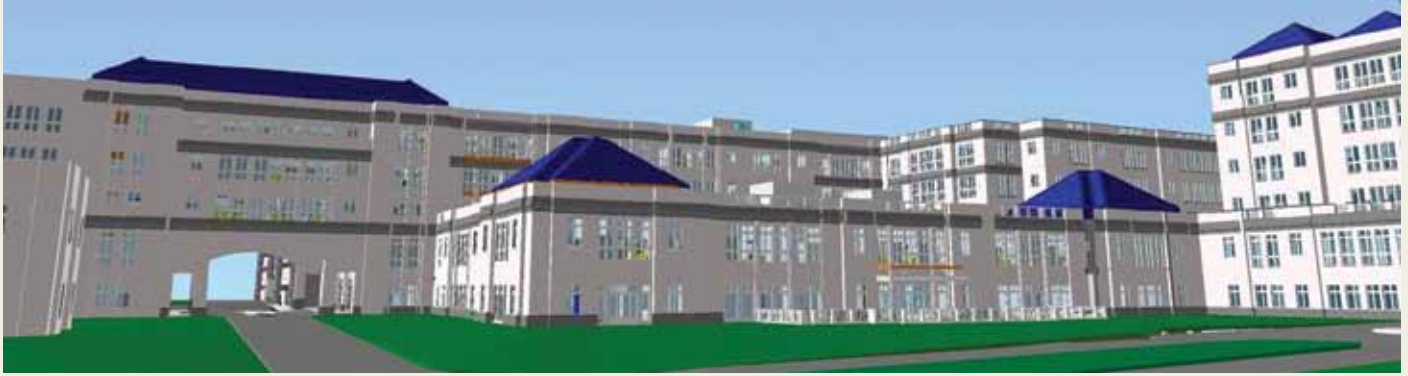
When complete, the system will have two station stops and will connect the airport terminals with a ground transportation hub that includes transfers to regional rail, bus and rental car facilities.

The Phase 1 contract begins Fisk's involvement and includes the design, engineering, and construction of the system, plus the delivery of eight state-of-the-art Crystal Mover Automatic People Mover (APM) vehicles.

The Orange Line will ultimately include three corridors totaling 24.4 miles of heavy rail, light rail, or bus rapid transit. The transit system will be operated by Miami-Dade Transit. The line will be constructed in three phases and separated into three corridors. Phase 1 includes the Earlington Heights – MIC Connector, a 2.4-mile extension from Earlington Heights Metrorail Station to the Miami Intermodal Center. Cost is estimated at \$290 million for construction. Funding will be from state and local funds. Completion is scheduled for late 2011. Phase 2 includes the North Corridor, a 9.5-mile northward extension. Phase 3 will complete the 10.6-mile East-West Corridor.

Located next to the Miami International Airport, the MIC is a massive ground transportation hub being developed by the Florida Department of Transportation. The MIC is to be completed by 2012 and will consist of a rental car center, the Miami Central Station, major roadway improvements, and will connect with the MIA Mover and the Orange Line – both Automatic People Movers. The MIC will provide "connectivity" for residents and visitors of Miami-Dade County and the

FISK DALLAS BUILDS ON MEDICAL PORTFOLIO



Fisk Dallas has been selected to join the construction team for the Cook Children's Medical Center's new 270,000 sq. ft. tower which will house 105 NICU beds, as well as 50 patient rooms. The project also includes a 114,000 sq. ft. vertical expansion of an existing garage, and an additional 226,000 sq. ft. of new parking garage.

Linbeck is the general contractor on the project and will serve as the team leader in an integrated project delivery with FKP Architects, Smith Seckman Reid Engineers, Fisk Electric, SKI-HI Mechanical and others. The project will be a complete 3D-modeled facility using REVIT and NAVISWORKS software programs in order to deliver a facility to

the owner that will contain a state-of-the-art Building Information Model (BIM). All work on the project is being coordinated weekly using "clash" software to minimize field installation conflicts.

The North Tower and garage work is Phase 1 of this project. The plan involves relocating an existing heliport to the roof of the new garage thereby making room for Phase II, which is set to include a 270,000 sq. ft. medical office building, that includes an ambulatory service center. Work on Phase I is set to be completed by spring of 2011 with Phase II completing by summer of 2012.

The project also includes the addition of a 1250-ton chiller, 1500 KW generator, and paralleling gear to an existing central plant.

In addition, a new generator farm (with two 1500 KW generators with expansion space for two future 1500 KW generators), new utility feed, paralleling gear, feeders to the new tower, and feeders to back-feed existing North Pavilion, will be included in the project.

COOK CHILDREN'S MEDICAL CENTER

Dallas, Texas

- 270,000 sq. ft. tower
- 340,000 sq. ft. garage
- 105 NICU beds
- 50 patient beds
- Sery, kitchen, procedure rooms, classrooms, etc.
- Central plant expansion
- 2-1500 KW generators & paralleling gear

RECENTLY AWARDED JOBS INCLUDE...

Fisk serves clients throughout the United States in several major market sectors including: healthcare, commercial, industrial, hospitality & gaming, sports & entertainment, data service, religious, educational and governmental. Proud of its past and excited about its future, Fisk is constantly seeking new opportunities to build projects as well as relationships that will withstand the test of time. Following is a sample of some of the projects recently awarded to Fisk.

Project	Location	Scope	Description
Benson Tower	New Orleans, LA	450,000 sf	Repair of building shell, electrical work for replacement of all mechanical systems
Child Development Center	Fort Sam Houston, TX	20,000 sf	New construction, complete electrical installation
Cook Children's Medical Center	Ft. Worth, TX	270,000 sf	New construction, (see article above)
DELL Computers	Austin, TX	Multiple buildings	Additions and upgrades to electrical systems
Federal Reserve Data Center	Dallas, TX	10,000 sf	Voice and data cabling system for new data center
Greystone Building	Las Vegas, NV	40,000 sf	Low voltage technologies
METC Medical Field Training Facility	Camp Bullis, TX	40,000 sf	New construction, complete electrical installation
Miami Intermodal Center	Miami, FL	4,000,000 sf	Electrical construction and cathodic protection
Miami Mover	Miami, FL	1.4 mile rail line	Automated people mover electrical and generator
In-Line Baggage Handling System	Ft. Lauderdale, FL	Baggage line	Renovation of existing baggage handling system
Orange Line	Miami, FL	2.4 mile rail line	Electrical construction, generators and cathodic protection
San Antonio International Airport	San Antonio, TX	400,000 sf	Low voltage systems for terminal expansion
T3 Capital Securities	Manhattan, NY	15,000 sf	Trading floor electrical systems
TSU School of Nursing	Round Rock, TX	80,000 sf	New construction, electrical, voice, data and security
Verizon Data Center	Richardson, TX	20,000 sf	Renovation of the facility

A MESSAGE FROM KEN

As I write this letter, the state of the economy continues to create challenges for our industry. Although we are beginning to experience some sporadic signs of stability, we still have a ways to go before we can say the end is in sight with any degree of certainty. Thankfully, Fisk has planned well and our inventory of resources is well stocked to weather this downturn.

While our financial strength and operational excellence are second to none in our industry, and continue to provide the lion's share of our Company's wherewithal to withstand the current economic weakness, it is the subtle benefits of "diversity"...in our customer base, our geographic markets, and our services and offerings that provides Fisk a powerful platform for revenue generation and growth even during these tough times. This business strategy of risk minimization though "diversity" serves us well – especially during these times of economic uncertainty.

With eight regional offices, Fisk can effectively compete and successfully complete work coast-to-coast in the United States. Our broad customer base includes hundreds of general contractors, developers and owners, each

bringing with them their own diverse portfolios of work including: commercial, industrial, technology/data, security, medical/research, hospitality/gaming, education, government, military, aviation, transportation, sports facilities and houses of worship to name a few. And, with services and offerings that include major new construction, security, data cabling, audio/visual, life safety, instrumentation and routine maintenance, Fisk truly is "one stop shopping for all things electric."

That said, does the current state of our nation's and our world's economy concern me? Of course. I would be foolish to proceed with a "business as usual" attitude and indifference toward the financial warning signs that surround us. But I also believe it is in tough times such as these that our commitment to continue to operate our business in a manner consistent with our Company's vision, mission and core values will ensure our success. As long as we respect and value our PEOPLE, stay true to our PROCESSES, always seek to enhance our PRODUCTIVITY, maximize our PURCHASING, prepare for our PRESENTATIONS, exercise CANDOR, maintain CONFIDENTIALITY and are ethical in our CONDUCT – we will be successful.

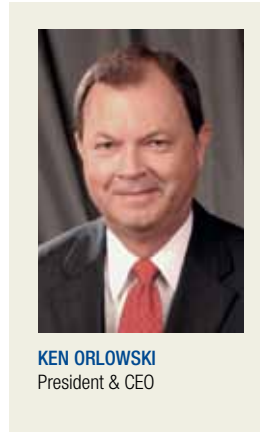
We remain committed to our strategy of

delivering outstanding value to our customers; a strategy characterized by quality and our ability to effectively control costs through the economical utilization of personnel, materials and equipment. Today, more than ever before, it is important that each of us provides the discipline and attention to detail in serving our customers that have become the hallmark of Fisk for almost a century.

Although the road to recovery will be slow, it now appears that the road is at least level and perhaps even leading out of, rather than into, what was once feared as a more depressed economic environment. As a Company nearing its 100th anniversary, Fisk has successfully endured many economic

downturns and, without doubt, will emerge from the current one fiscally sound and poised to capitalize on market opportunities as they become available.

Together we have built a powerful Company; a dominant force in the areas in which we choose to compete. We have superior market place advantages in our size, scalability, liquidity, geographic and business diversity, and, most importantly, in our dedicated and focused workforce committed to success. For this, I thank you.



KEN ORŁOWSKI
President & CEO

FISK NEW YORK GIVES ICONIC HOTEL A LIFT

New York's Upper East Side is home to captains of industry, pristine townhouse palaces, serene tree-lined streets and the Hotel Plaza Athenee. It is also the location of Fisk New York's latest world-class project.

For decades the Hotel Plaza Athenee has been the destination of senators, rock stars and dignitaries. The 64th Street location, positioned in the heart of Madison Avenue shopping area, has made staying at this 17-floor boutique hotel a unique experience.

The renovation of the hotel which started in May, with completion in October, involved a complete electrical retrofit including overhaul of the lobby, spa, 80 guest rooms and penthouse suites. Along with the general contractor, Structuretone, Fisk overcame a myriad of

obstacles to complete the project on schedule.

Fisk's project team responded to the special challenges of renovating the 80-year old structure which contains over 30 types of unique guest rooms. Suites and penthouses ranging from 325 to 1,975 square feet were retro-fitted for fire protection, American Disabilities Act Compliance and high-end lighting. Special storage containers were fabricated to move and house the 150 crystal chandeliers that were removed and re-hung during the project.

One of the most challenging aspects of the project was that the construction team was tasked with performing this work while keeping the hotel operational. Fisk was thrilled to be a part of the reconditioning of this iconic structure.



HOTEL PLAZA ATHENE

FISK SAN ANTONIO SCORES HIGH MARKS IN EDUCATION



NORTHWEST VISTA COLLEGE CAMPUS

Fisk San Antonio is wrapping up a huge addition to the Alamo Community College District (ACCD) at Northwest Vista College. With continued growth in the city, ACCD decided to make a major expansion to this northwest area. A total of \$106 million dollars was allocated for the project. The expansion will allow the college to offer a wider area of educational focus and will enable more students to attend the college. The buildings that Fisk were awarded by Bartlett Cocke General Contractors include Juniper Hall, a three-story academic class-

room building; Redbud Hall, a three-story library and classroom building; Live Oak Hall, a three-story academic classroom building with science labs; Cypress Campus Center, a two-story campus center and cafeteria; Palmetto Fine and Performing Arts Center, which has a theater/auditorium and dance classrooms; Mountain Laurel Academic Center, a technology upgrade to the classrooms; and an addition to the Mexican Persimmon Central Plant and Facilities.

A site development package was also awarded to Fisk that included new parking, a

lake, green areas and a new 35kv power distribution system. Manzanillo Hall is another building that Fisk will support with upgrades for the school's other uses. Fisk and Bartlett Cocke have been working diligently on this site since June 2007. Scott Sorrell, Fisk Project Manager and Superintendent, was selected to coordinate the electrical construction services for these projects. Mr. Sorrell has been with Fisk Electric in San Antonio for 4-1/2 years and worked on the site during the original construction phase in the mid 1990s."

FISK HOUSTON DOES RESEARCH

Fisk Houston is scheduled to finish the electrical construction for the The Methodist Hospital Research Institute building in July of 2010. The 440,000 square foot facility contains high end teaching and administrative support space, BSL-2 wet research labs, an animal vivarium, the Methodist Institute for Technology, Innovation and Education (MITIE) physician training center, complete with four operating rooms and eighteen surgical device training suites, a cyclotron, and imaging via 3.0T, 7.0T, 9.4T and 11.7 T MRIs.

Planning began in the fall of 2003 when physicians and researchers at The Methodist Hospital in Houston conceived the idea of an interdisciplinary research facility without the usual departmental boundaries. In conjunction with remodeling of 100,000 square feet of existing research space at Methodist, the new facility has attracted internationally recognized scientists from across the country, who are bringing teams of investigators, new technologies, and clinical trials that will benefit patients in Houston and all over the world. Methodist currently has more than 700 clinical trials underway.

The spirit of collaboration has already yielded exciting new approaches to the diagnosis and treatment of cancer, cardiovascular disease, stroke, and infectious diseases. Harvey Builders is the General Contractor. The Architectural team includes WHR Architects, KPF Associates, and CO Architects. Haynes Whaley is the Structural Engineer and Affiliated Engineers are the MEP Engineers. The Owner is The Methodist Hospital Research Institute and the Developer is Jacobs Facility.



METHODIST RESEARCH TOWER

FISK LAS VEGAS INSTITUTES OSHA 30 TRAINING

The state of Nevada recently instituted rigid safety training requirements for construction workers.

The new law requires that all construction workers provide proof to their employer that they have successfully completed an OSHA 10-hour course within the last five years. Without it they cannot remain on the job. This same law requires that supervisors of construction workers must have completed an OSHA 30-hour course within the last five years to maintain their supervisory positions. Fisk management recognized the opportunity to step ahead of other contractors and immediately began to provide OSHA 30 training for its supervisory staff. This action enabled Fisk to provide the required certifications for its workforce well ahead of the 2010 deadline and exemplifies Fisk's commitment to worker and jobsite safety.

Using members of Fisk's existing Safety Team, a staff of training instructors was developed. These in-house training instructors were subsequently enrolled in the OSHA 510 course, and the OSHA 500 Trainer course. Both of these courses were offered locally through an outreach program of the University of California OSHA Institute. The completion of the OSHA 500 course gives Fisk the ability to provide the OSHA 10 and 30 certifica-

tion training to employees. The Fisk Safety Team developed a curriculum that met the core requirements of the standard, as well as containing relative topics and a small portion of personal experience to display personal knowledge of and experience in the training subject.

The training was conducted in Fisk Information Technologies' new training facility. With this modern facility, Fisk has the capability to display DVD, VHS, and PowerPoint media, along with Internet access to review OSHA, NIOSH, and Nevada standards for online reference during question and answer periods.

Fisk has successfully delivered three training classes to date, providing OSHA 30 cards to sixty members of the supervisory team. The added training makes for long days but pays a large dividend in safety and customer value. The added knowledge provided to employees gives Fisk a significant advantage in an increasing competitive market. Every employee who has completed the training walks out of class with a thorough understanding of the major hazards in the construction workplace as well as manageable ways to mitigate those hazards. Along the way employees also enhance their ability to navigate through tedious OSHA standards helping them to ensure projects are

in compliance with both OSHA and Fisk's safety standards.

An added benefit of completing the expanded curriculum enables Fisk to provide each employee with a CPR(AED)/First Aid certification and a Confined Space Training certification. Fisk is currently planning for at least one additional OSHA 30 class later this year, and may at some point consider offering the OSHA 10 hour course to the journeyman field staff in-house.



OSHA TRAINING, LAS VEGAS

FISK NEW ORLEANS SUPPORTS THE 141ST

On July 19th, 1832, President Andrew Jackson signed a Congressional bill that provided \$180,000 for the construction of Jackson Barracks, a series of brick buildings built to house the troops stationed at various Mississippi River forts in the New Orleans area. A little over three years later, on December 31st, 1835, the project was completed. On August 28th, 2005, along came Hurricane Katrina and the site was destroyed.

Today Fisk, along with its design-build partners Woodward Design+Build, are in the final stages of completion of the new 141st Readiness Center at Jackson Barracks. Located at 6400 St. Claude Ave. in New Orleans, Louisiana, the project consists of the demolition of the existing site, construction of the

new 141 Readiness Center, renovation of the existing Operation and Maintenance Buildings in the area, and the addition of a new Central Plant which also serves several buildings located between St. Claude and Claiborne Ave.

The design stage began on September 24, 2006 and will be occupied by the Louisiana National Guard upon completion. In addition to the three buildings that are under contract, there is approximately 300,000 sq. ft. of parking for military and private vehicles.

The Readiness Center is a four-story, 112,000 sq. ft. structural steel and brick veneer building. The building's exterior has cast stone that is designed for anti-blast requirements. The design of the building is being coordinated to meet LEED standards, which are required by the specifications. The exterior of



141ST READINESS CENTER

the new Central Plant is coordinated to match the 141st Readiness Center exterior as well as other adjacent buildings being constructed.

A highlight of the building is a cannon that will be on display in its main lobby. The cannon was forged in 1861 and was in service with the 141st in the Battle of Gettysburg.

South Florida Region between the transportation systems in Palm Beach, Fort Lauderdale, Miami and the Florida Keys, as well as decongesting the streets in and around the busy airport.

Miami International Airport, Automated People Mover

Miami, FL

Scope: 1.4-mile rail

Description: Design-build, major commuter link between, Miami International Airport and the MIC, 8 Rail Cars – Automatic People Movers Generator, contract value - \$3.2 million

Miami Intermodal Center

Miami, FL

Scope: 4 million sq. ft.

Description: Rental car center, fueling, car wash facilities, generator post tension and precast construction, contract value - \$25 million

MIC Transportation Rail System

Miami, FL

Scope (Phase 1): 2.4 mile rail

Description: Major central commuter hub links N-S and E-W transit rails, generator, cathodic protection, contract value - \$13.5 million

EMPLOYEE SPOTLIGHT - MIAMI

Marie Michaud – Executive Assistant – Retired
Ivette Rivas – Joins the Fisk team as Executive Assistant

Pat Nugent, Project Manager in Miami Service, has devoted time and interest in the Boy Scouts with his son Patrick, II. The Boy Scouts of America is the largest youth organization in the United States with over five million members in its age-related divisions. Since its founding in 1910 as part of the international Scout Movement, more than 110 million Americans have been members of the BSA.

Pat was recently presented a District Award and one of the leaders said the best recommendation he could give was – one of his Life Scouts told him “we are sure lucky to have Mr. Nugent in our Troop.” Mr. Nugent is also appreciated in the Fisk Miami Troop.

IT’S MAGIC WITH WIC

MAGIC stands for “Mentoring a Girl in Construction”. The National Association of Women in Construction (NAWIC) sponsored a 4-day camp for 22 local area girls. Activities included building



AN UPGRADED CONFERENCE ROOM OFFERS A PLEASANT ATMOSPHERE FOR FISK MIAMI. PICTURED ARE LUJIS ROSAS, CONTROLLER; JUANA DUQUE, ACCOUNTS PAYABLE; BEATRIZ ARGEMI, BILLING; MAYRA METZ, PAYROLL; DAVINA NUNEZ, ACCOUNTS RECEIVABLE

22 dog houses to donate to local area animal rescue services. This was the first camp in the Houston area and Fisk was a proud sponsor of the program.

MAGIC Summer Camps offers high school girls the opportunity to learn about the countless avenues of employment available to women in the construction industry and to engage these young women via hands-on training in basic construction skills. This opportunity to gain marketable skills and to experience the exhilaration of successfully performing difficult tasks builds self-confidence and boosts self-image.

FISK CAREERS

With offices throughout the United States, Fisk offers exciting career opportunities in all aspects of electrical design, construction, service and the support functions critical to their success. Project managers, estimators, schedulers, planners, designers, finance and administrative personnel work side-by-side in Fisk offices bringing appropriate solutions to Fisk’s customers whenever and wherever needed.

At Fisk, we understand that exceptional employees require exceptional benefits. Our pride in our work is second only to our pride in the people we develop. Fisk is committed to valuing diversity and providing equal employment opportunities to all employees and applicants in accordance with all federal and state laws.

For suggestions, comments or questions about the newsletter, please send your correspondence to editor@fiskcorp.com. If you have a story idea – we would love to hear from you as well.

BENEFITS PROGRAM

Fisk’s employees are crucial to the continued growth and success of the Company. To maintain the exceptional quality of this workforce, Fisk offers one of the finest and most comprehensive benefits programs available in the industry. All full-time employees are eligible for participation in these programs on their first day of employment.

Health and Wellness

- Comprehensive Medical and Prescription Drug Insurance Plans
- Comprehensive Dental And Vision Care Insurance Plans
- Company-Paid Life Insurance
- Company-Paid Personal Accident Insurance
- Health Care Flexible Spending Account
- Optional Group Universal Life Insurance (self, spouse, children)
- Optional Personal Accident Insurance (self, spouse, children)
- Optional Disability (short-term and long-term)
- Optional Long Term Care Insurance

Work Life

- 401(k) Retirement Plan-Company Match/Immediate Vesting
- Adoption Assistance Program
- Paid Holidays
- Paid Vacation
- Paid Sick Days
- Credit Union
- Employee Assistance Program
- Pet Insurance
- 529 College Savings Plan
- Training and Development Programs

Important Contact Numbers

Human Resource Department

Darcy Kazanecki

Office Number: 713-865-9477

Fax Number: 713-865-9479